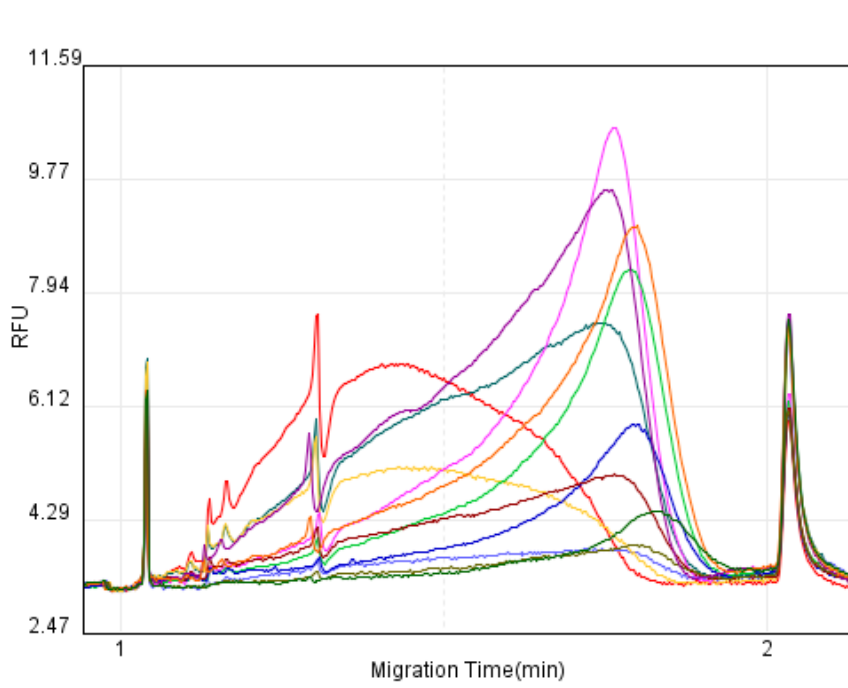
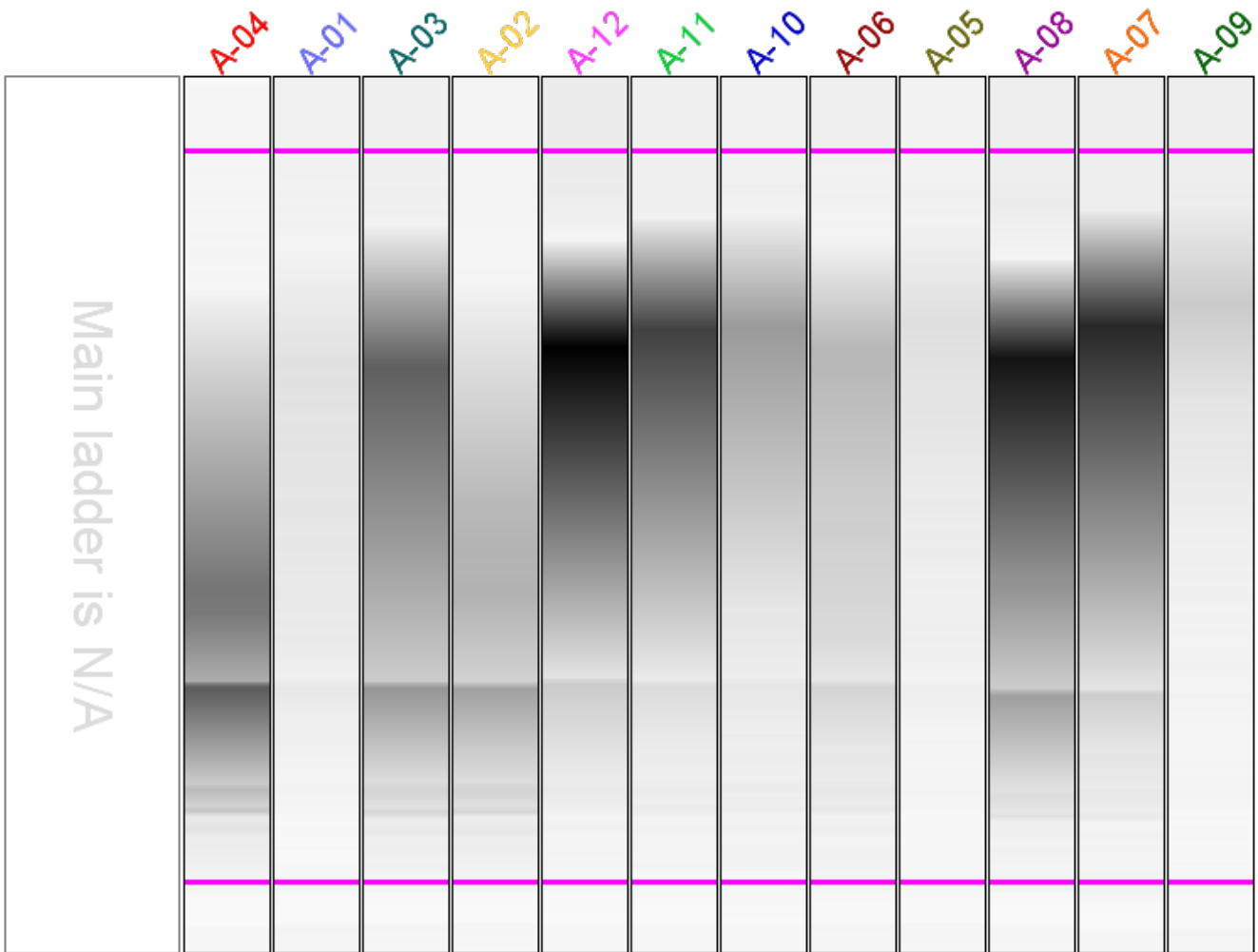
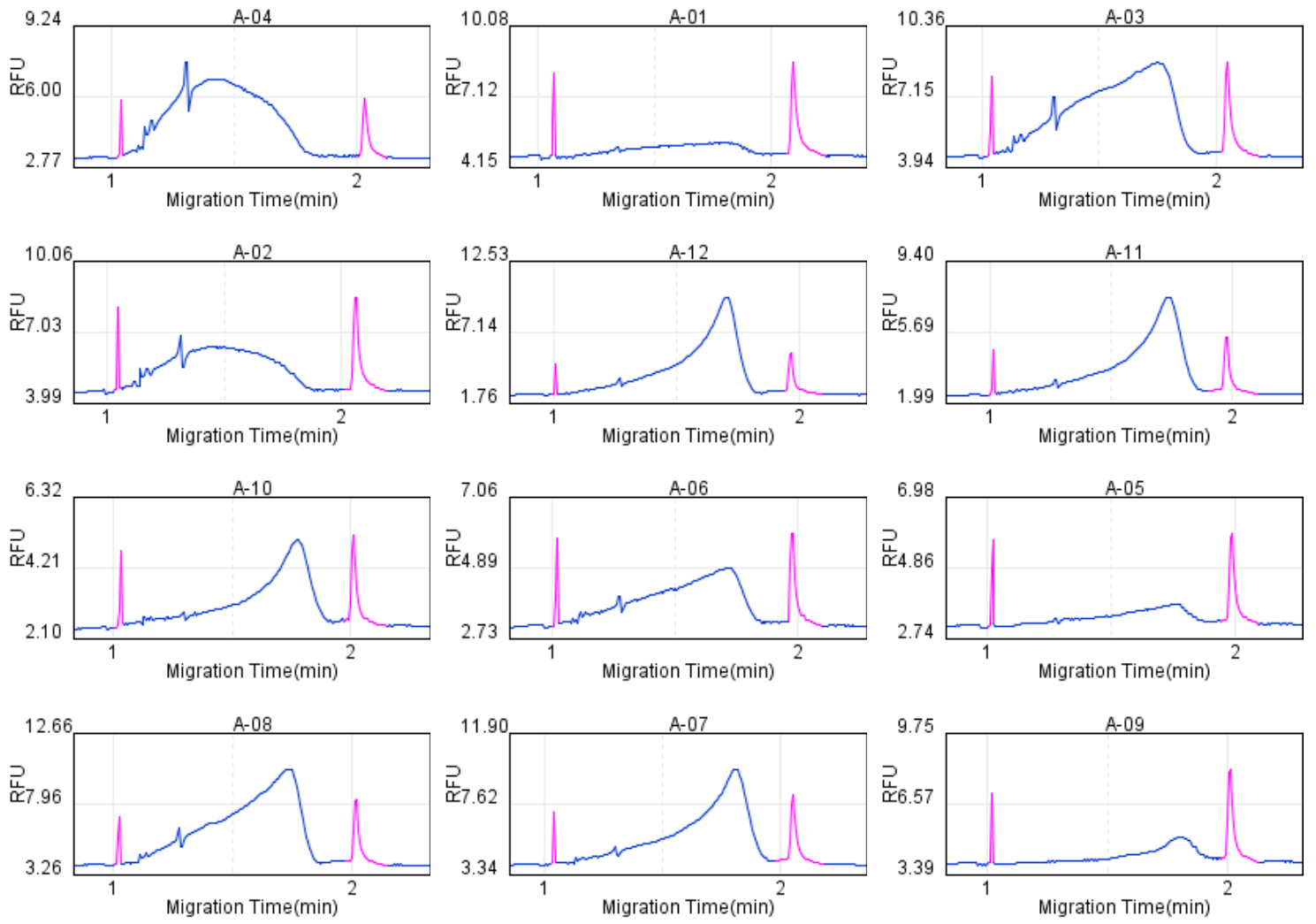


File Summary



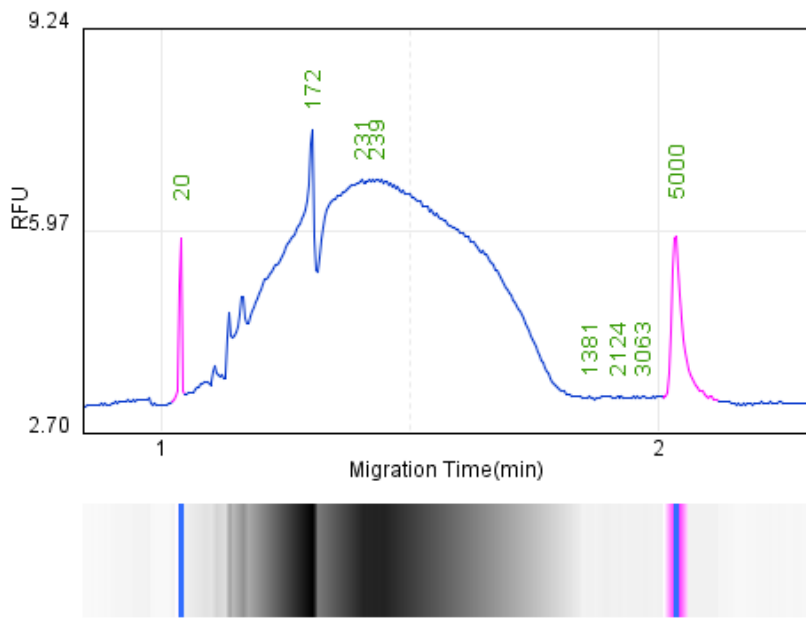
File Name	
<span style="color: red;">■</span>	C4_S1A04_R1_CH2_1.bopx
<span style="color: blue;">■</span>	C1_S1A01_R1_CH1_1.bopx
<span style="color: teal;">■</span>	C3_S1A03_R1_CH1_1.bopx
<span style="color: yellow;">■</span>	C2_S1A02_R1_CH1_1.bopx
<span style="color: magenta;">■</span>	P4_S1A12_R1_CH4.bopx
<span style="color: green;">■</span>	P3_S1A11_R1_CH4.bopx
<span style="color: darkblue;">■</span>	P2_S1A10_R1_CH4.bopx
<span style="color: darkred;">■</span>	L2_S1A06_R1_CH2.bopx
<span style="color: olive;">■</span>	L1_S1A05_R1_CH2.bopx
<span style="color: purple;">■</span>	L4_S1A08_R1_CH3.bopx
<span style="color: orange;">■</span>	L3_S1A07_R1_CH3.bopx
<span style="color: darkgreen;">■</span>	P1_S1A09_R1_CH3.bopx





---

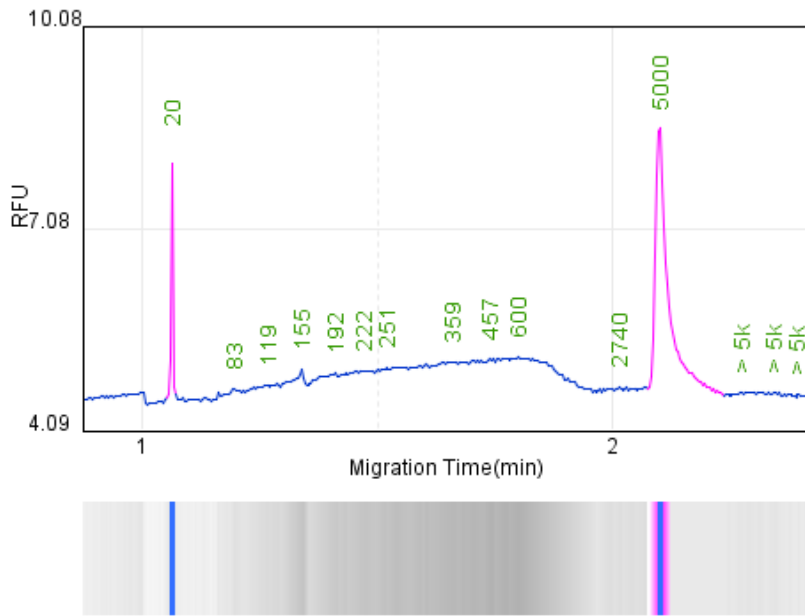
Result:	C4_S1A04_R1_CH2_1.bopx	Instrument ID:	5567003745270004
Test Time:	2025-Jun-04 10:49(UTC+08)	Software & Firmware Version:	3.4.3 & 5
Operator:		Cartridge & Run Number:	S2-O-4CH-250210-520 & 100
Method:	M-4-10-08-160	Manufacture & Expiration Date:	2025-Feb-10 & 2025-Aug-09
Sample Name:		Alignment Marker:	UserDefine (20 bp & 5K bp)
Sample ID:	C4		



No	bp	ng/μl
1	<LM	N/A
2	20	N/A
3	45	0.35
4	55	0.31
5	67	0.31
6	96	3.92
7	172	8.08
8	231	13.75
9	239	3.45
10	240	21.95
11	1,381	<0.01
12	1,751	0.02
13	2,124	<0.01
14	2,476	<0.01
15	2,694	<0.01
16	3,063	<0.01
17	4,002	<0.01
18	5,000	N/A
19	> 5k	N/A
20	> 5k	N/A
21	> 5k	N/A
22	> 5k	N/A
23	> 5k	N/A
24	> 5k	N/A
25	> 5k	N/A
26	> 5k	N/A
27	> 5k	N/A
28	> 5k	N/A
29	> 5k	N/A
30	> 5k	N/A
31	> 5k	N/A
32	> 5k	N/A
33	> 5k	N/A
34	> 5k	N/A
35	> 5k	N/A
36	> 5k	N/A
37	> 5k	N/A
38	> 5k	N/A
39	> 5k	N/A
40	> 5k	N/A
41	> 5k	N/A
42	> 5k	N/A
43	> 5k	N/A

---

Result:	C1_S1A01_R1_CH1_1.bopx	Instrument ID:	5567003745270004
Test Time:	2025-Jun-04 10:49(UTC+08)	Software & Firmware Version:	3.4.3 & 5
Operator:		Cartridge & Run Number:	S2-O-4CH-250210-520 & 100
Method:	M-4-10-08-160	Manufacture & Expiration Date:	2025-Feb-10 & 2025-Aug-09
Sample Name:		Alignment Marker:	UserDefine (20 bp & 5K bp)
Sample ID:	C1		



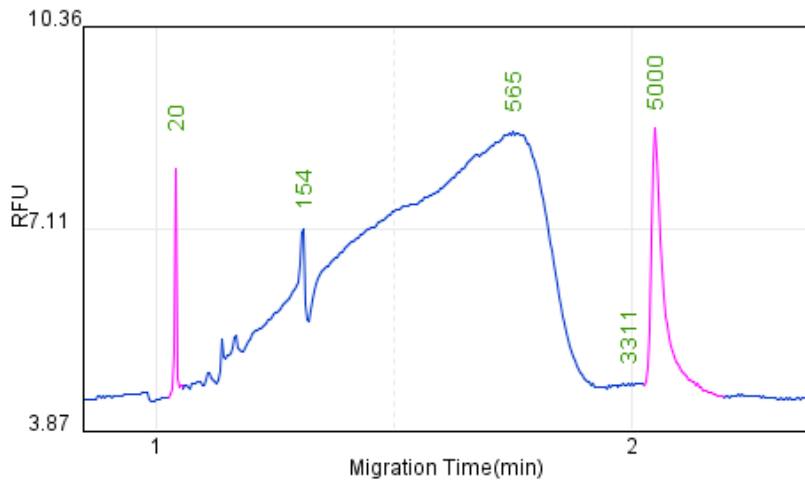
No	bp	ng/μl
1	<LM	N/A
2	20	N/A
3	83	0.06
4	94	0.02
5	119	0.17
6	129	0.11
7	155	0.21
8	192	0.40
9	201	0.14
10	222	0.36
11	251	0.13
12	263	0.24
13	298	0.25
14	306	0.13
15	359	0.62
16	380	0.23
17	406	0.32
18	457	0.29
19	504	0.32
20	600	1.27
21	2,382	0.02
22	2,740	0.01
23	3,302	0.01
24	3,997	0.01
25	5,000	N/A
26	> 5k	N/A
27	> 5k	N/A
28	> 5k	N/A
29	> 5k	N/A
30	> 5k	N/A
31	> 5k	N/A
32	> 5k	N/A
33	> 5k	N/A
34	> 5k	N/A
35	> 5k	N/A
36	> 5k	N/A
37	> 5k	N/A
38	> 5k	N/A
39	> 5k	N/A
40	> 5k	N/A
41	> 5k	N/A
42	> 5k	N/A
43	> 5k	N/A
44	> 5k	N/A
45	> 5k	N/A

---

No	bp	ng/μl
46	> 5k	N/A
47	> 5k	N/A
48	> 5k	N/A
49	> 5k	N/A
50	> 5k	N/A
51	> 5k	N/A
52	> 5k	N/A
53	> 5k	N/A
54	> 5k	N/A
55	> 5k	N/A
56	> 5k	N/A
57	> 5k	N/A
58	> 5k	N/A
59	> 5k	N/A
60	> 5k	N/A
61	> 5k	N/A
62	> 5k	N/A
63	> 5k	N/A
64	> 5k	N/A
65	> 5k	N/A
66	> 5k	N/A
67	> 5k	N/A
68	> 5k	N/A
69	> 5k	N/A
70	> 5k	N/A
71	> 5k	N/A
72	> 5k	N/A
73	> 5k	N/A
74	> 5k	N/A
75	> 5k	N/A

---

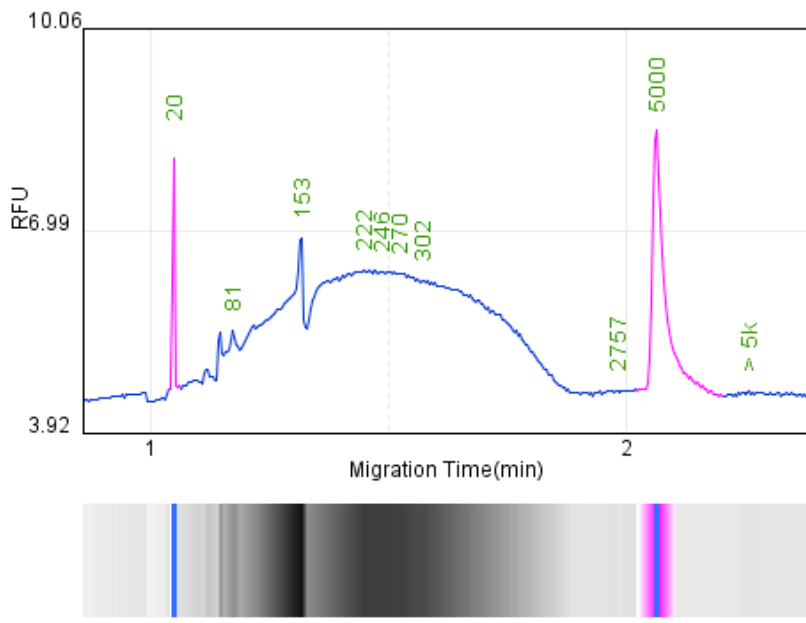
Result:	C3_S1A03_R1_CH1_1.bopx	Instrument ID:	5567003745270004
Test Time:	2025-Jun-04 11:01(UTC+08)	Software & Firmware Version:	3.4.3 & 5
Operator:		Cartridge & Run Number:	S2-O-4CH-250210-520 & 98
Method:	M-4-10-08-160	Manufacture & Expiration Date:	2025-Feb-10 & 2025-Aug-09
Sample Name:		Alignment Marker:	UserDefine (20 bp & 5K bp)
Sample ID:	C3		



No	bp	ng/μl
1	20	N/A
2	30	0.04
3	44	0.23
4	53	0.27
5	67	0.40
6	82	0.86
7	154	3.00
8	565	29.77
9	2,694	0.02
10	3,311	0.02
11	4,011	0.01
12	5,000	N/A
13	> 5k	N/A
14	> 5k	N/A
15	> 5k	N/A
16	> 5k	N/A
17	> 5k	N/A
18	> 5k	N/A
19	> 5k	N/A
20	> 5k	N/A
21	> 5k	N/A
22	> 5k	N/A
23	> 5k	N/A
24	> 5k	N/A
25	> 5k	N/A
26	> 5k	N/A
27	> 5k	N/A
28	> 5k	N/A
29	> 5k	N/A
30	> 5k	N/A
31	> 5k	N/A
32	> 5k	N/A
33	> 5k	N/A
34	> 5k	N/A
35	> 5k	N/A
36	> 5k	N/A
37	> 5k	N/A
38	> 5k	N/A
39	> 5k	N/A
40	> 5k	N/A
41	> 5k	N/A
42	> 5k	N/A
43	> 5k	N/A
44	> 5k	N/A
45	> 5k	N/A

---

Result:	C2_S1A02_R1_CH1_1.bopx	Instrument ID:	5567003745270004
Test Time:	2025-Jun-04 10:55(UTC+08)	Software & Firmware Version:	3.4.3 & 5
Operator:		Cartridge & Run Number:	S2-O-4CH-250210-520 & 99
Method:	M-4-10-08-160	Manufacture & Expiration Date:	2025-Feb-10 & 2025-Aug-09
Sample Name:		Alignment Marker:	UserDefine (20 bp & 5K bp)
Sample ID:	C2		



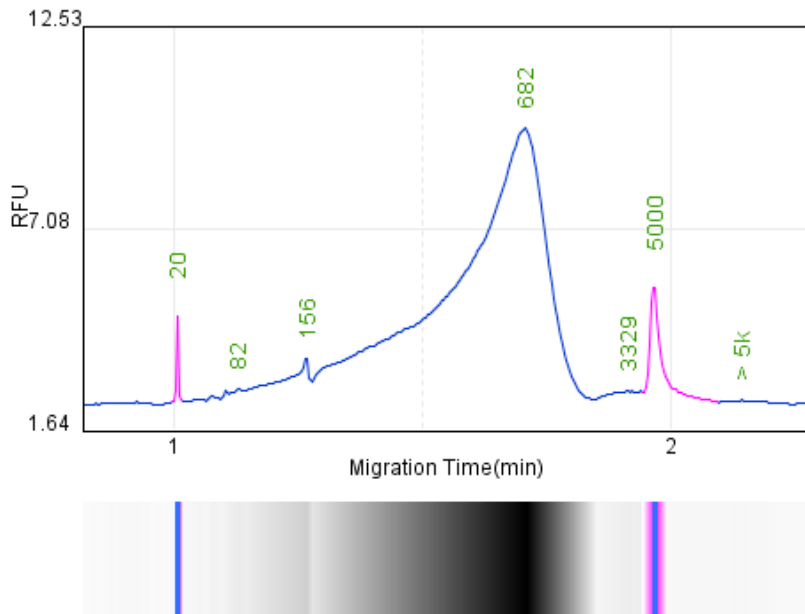
No	bp	ng/μl
1	20	N/A
2	44	0.27
3	54	0.31
4	67	0.38
5	81	0.85
6	105	0.79
7	153	2.34
8	222	3.87
9	229	0.33
10	235	0.21
11	246	0.33
12	255	0.59
13	270	1.20
14	302	6.73
15	1,485	<0.01
16	2,757	<0.01
17	3,336	0.01
18	5,000	N/A
19	> 5k	N/A
20	> 5k	N/A
21	> 5k	N/A
22	> 5k	N/A
23	> 5k	N/A
24	> 5k	N/A
25	> 5k	N/A
26	> 5k	N/A
27	> 5k	N/A
28	> 5k	N/A
29	> 5k	N/A
30	> 5k	N/A
31	> 5k	N/A
32	> 5k	N/A
33	> 5k	N/A
34	> 5k	N/A
35	> 5k	N/A
36	> 5k	N/A
37	> 5k	N/A
38	> 5k	N/A
39	> 5k	N/A
40	> 5k	N/A
41	> 5k	N/A
42	> 5k	N/A
43	> 5k	N/A
44	> 5k	N/A
45	> 5k	N/A

---

No	bp	ng/μl
46	> 5k	N/A
47	> 5k	N/A
48	> 5k	N/A
49	> 5k	N/A
50	> 5k	N/A
51	> 5k	N/A
52	> 5k	N/A
53	> 5k	N/A
54	> 5k	N/A
55	> 5k	N/A
56	> 5k	N/A
57	> 5k	N/A
58	> 5k	N/A
59	> 5k	N/A
60	> 5k	N/A
61	> 5k	N/A

---

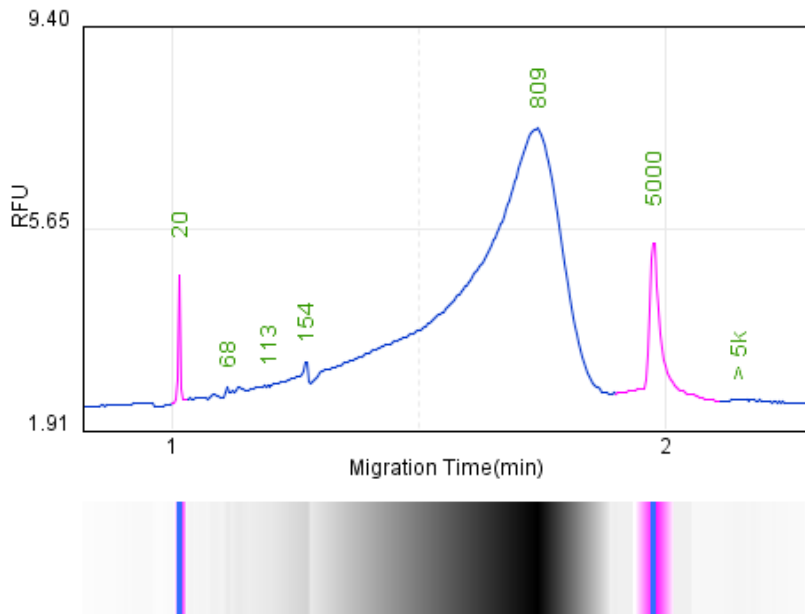
Result:	P4_S1A12_R1_CH4.bopx	Instrument ID:	5567003745270004
Test Time:	2025-Jun-04 11:01(UTC+08)	Software & Firmware Version:	3.4.3 & 5
Operator:		Cartridge & Run Number:	S2-O-4CH-250210-520 & 98
Method:	M-4-10-08-160	Manufacture & Expiration Date:	2025-Feb-10 & 2025-Aug-09
Sample Name:		Alignment Marker:	UserDefine (20 bp & 5K bp)
Sample ID:	P4		



No	bp	ng/μl
1	<LM	N/A
2	<LM	N/A
3	<LM	N/A
4	<LM	N/A
5	20	N/A
6	42	0.20
7	55	0.26
8	82	0.84
9	156	2.22
10	682	46.07
11	3,329	0.17
12	4,048	0.05
13	5,000	N/A
14	> 5k	N/A
15	> 5k	N/A
16	> 5k	N/A
17	> 5k	N/A
18	> 5k	N/A
19	> 5k	N/A
20	> 5k	N/A
21	> 5k	N/A
22	> 5k	N/A
23	> 5k	N/A
24	> 5k	N/A
25	> 5k	N/A
26	> 5k	N/A
27	> 5k	N/A
28	> 5k	N/A
29	> 5k	N/A
30	> 5k	N/A
31	> 5k	N/A
32	> 5k	N/A
33	> 5k	N/A
34	> 5k	N/A
35	> 5k	N/A
36	> 5k	N/A
37	> 5k	N/A
38	> 5k	N/A
39	> 5k	N/A
40	> 5k	N/A
41	> 5k	N/A
42	> 5k	N/A

---

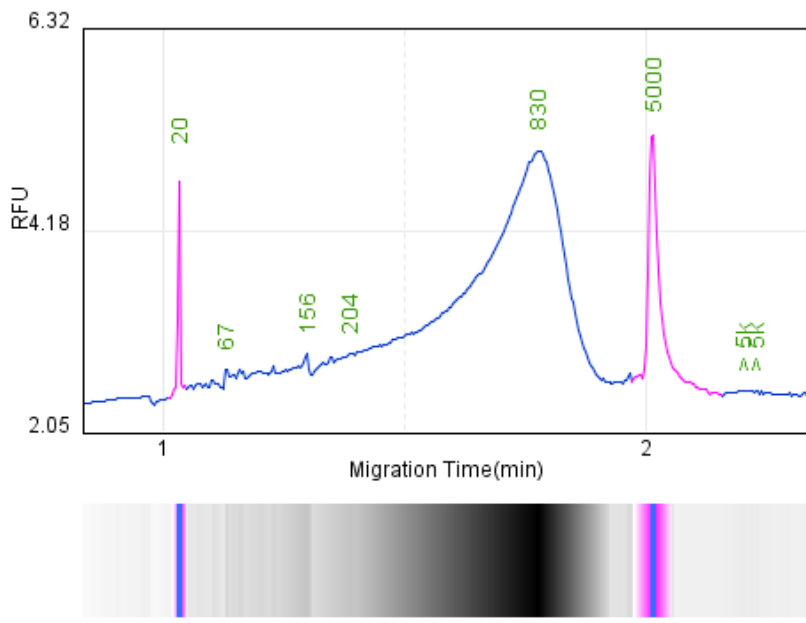
Result:	P3_S1A11_R1_CH4.bopx	Instrument ID:	5567003745270004
Test Time:	2025-Jun-04 10:55(UTC+08)	Software & Firmware Version:	3.4.3 & 5
Operator:		Cartridge & Run Number:	S2-O-4CH-250210-520 & 99
Method:	M-4-10-08-160	Manufacture & Expiration Date:	2025-Feb-10 & 2025-Aug-09
Sample Name:		Alignment Marker:	UserDefine (20 bp & 5K bp)
Sample ID:	P3		



No	bp	ng/μl
1	<LM	N/A
2	<LM	N/A
3	<LM	N/A
4	<LM	N/A
5	<LM	N/A
6	20	N/A
7	32	0.07
8	42	0.22
9	54	0.29
10	68	0.30
11	81	0.54
12	113	0.71
13	154	1.17
14	809	27.41
15	2,729	0.02
16	5,000	N/A
17	> 5k	N/A
18	> 5k	N/A
19	> 5k	N/A
20	> 5k	N/A
21	> 5k	N/A
22	> 5k	N/A
23	> 5k	N/A
24	> 5k	N/A
25	> 5k	N/A
26	> 5k	N/A
27	> 5k	N/A
28	> 5k	N/A
29	> 5k	N/A
30	> 5k	N/A
31	> 5k	N/A
32	> 5k	N/A
33	> 5k	N/A
34	> 5k	N/A
35	> 5k	N/A
36	> 5k	N/A
37	> 5k	N/A
38	> 5k	N/A
39	> 5k	N/A
40	> 5k	N/A

---

Result:	P2_S1A10_R1_CH4.bopx	Instrument ID:	5567003745270004
Test Time:	2025-Jun-04 10:49(UTC+08)	Software & Firmware Version:	3.4.3 & 5
Operator:		Cartridge & Run Number:	S2-O-4CH-250210-520 & 100
Method:	M-4-10-08-160	Manufacture & Expiration Date:	2025-Feb-10 & 2025-Aug-09
Sample Name:		Alignment Marker:	UserDefine (20 bp & 5K bp)
Sample ID:	P2		



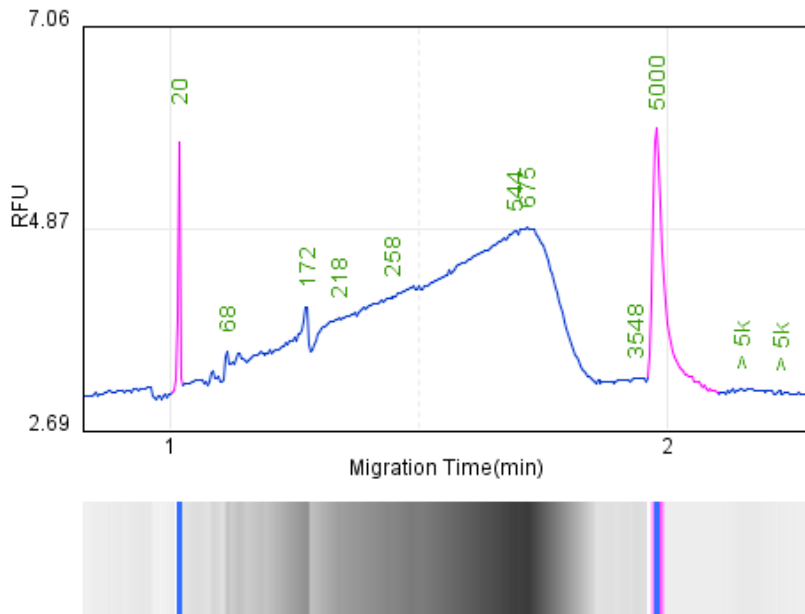
No	bp	ng/μl
1	<LM	N/A
2	<LM	N/A
3	<LM	N/A
4	<LM	N/A
5	<LM	N/A
6	20	N/A
7	33	0.11
8	39	0.33
9	54	0.33
10	67	0.24
11	76	0.21
12	83	0.34
13	106	0.68
14	121	0.23
15	156	0.60
16	204	1.35
17	830	13.32
18	3,028	0.04
19	3,484	0.03
20	5,000	N/A
21	> 5k	N/A
22	> 5k	N/A
23	> 5k	N/A
24	> 5k	N/A
25	> 5k	N/A
26	> 5k	N/A
27	> 5k	N/A
28	> 5k	N/A
29	> 5k	N/A
30	> 5k	N/A
31	> 5k	N/A
32	> 5k	N/A
33	> 5k	N/A
34	> 5k	N/A
35	> 5k	N/A
36	> 5k	N/A
37	> 5k	N/A
38	> 5k	N/A
39	> 5k	N/A
40	> 5k	N/A
41	> 5k	N/A
42	> 5k	N/A
43	> 5k	N/A
44	> 5k	N/A
45	> 5k	N/A

---

No	bp	ng/μl
46	> 5k	N/A
47	> 5k	N/A
48	> 5k	N/A
49	> 5k	N/A
50	> 5k	N/A

---

Result:	L2_S1A06_R1_CH2.bopx	Instrument ID:	5567003745270004
Test Time:	2025-Jun-04 11:01(UTC+08)	Software & Firmware Version:	3.4.3 & 5
Operator:		Cartridge & Run Number:	S2-O-4CH-250210-520 & 98
Method:	M-4-10-08-160	Manufacture & Expiration Date:	2025-Feb-10 & 2025-Aug-09
Sample Name:		Alignment Marker:	UserDefine (20 bp & 5K bp)
Sample ID:	L2		



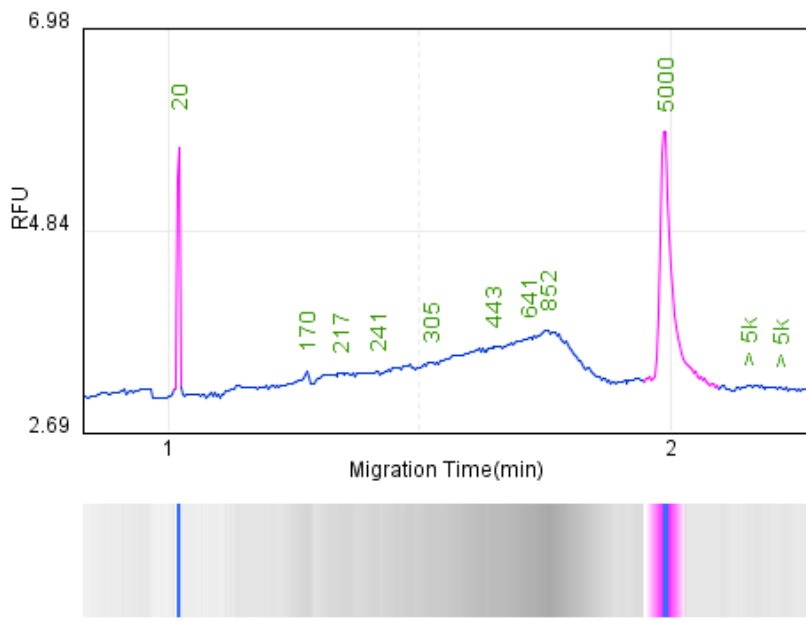
No	bp	ng/μl
1	<LM	N/A
2	20	N/A
3	41	0.15
4	54	0.10
5	68	0.08
6	93	1.32
7	130	0.38
8	172	1.24
9	218	1.87
10	258	2.24
11	284	1.58
12	294	0.31
13	544	9.40
14	675	3.77
15	2,062	<0.01
16	2,467	0.02
17	3,106	0.02
18	3,548	0.02
19	4,354	<0.01
20	5,000	N/A
21	> 5k	N/A
22	> 5k	N/A
23	> 5k	N/A
24	> 5k	N/A
25	> 5k	N/A
26	> 5k	N/A
27	> 5k	N/A
28	> 5k	N/A
29	> 5k	N/A
30	> 5k	N/A
31	> 5k	N/A
32	> 5k	N/A
33	> 5k	N/A
34	> 5k	N/A
35	> 5k	N/A
36	> 5k	N/A
37	> 5k	N/A
38	> 5k	N/A
39	> 5k	N/A
40	> 5k	N/A
41	> 5k	N/A
42	> 5k	N/A
43	> 5k	N/A
44	> 5k	N/A
45	> 5k	N/A

---

No	bp	ng/μl
46	> 5k	N/A
47	> 5k	N/A
48	> 5k	N/A
49	> 5k	N/A
50	> 5k	N/A
51	> 5k	N/A
52	> 5k	N/A
53	> 5k	N/A
54	> 5k	N/A
55	> 5k	N/A
56	> 5k	N/A
57	> 5k	N/A
58	> 5k	N/A
59	> 5k	N/A

---

Result:	L1_S1A05_R1_CH2.bopx	Instrument ID:	5567003745270004
Test Time:	2025-Jun-04 10:55(UTC+08)	Software & Firmware Version:	3.4.3 & 5
Operator:		Cartridge & Run Number:	S2-O-4CH-250210-520 & 99
Method:	M-4-10-08-160	Manufacture & Expiration Date:	2025-Feb-10 & 2025-Aug-09
Sample Name:		Alignment Marker:	UserDefine (20 bp & 5K bp)
Sample ID:	L1		



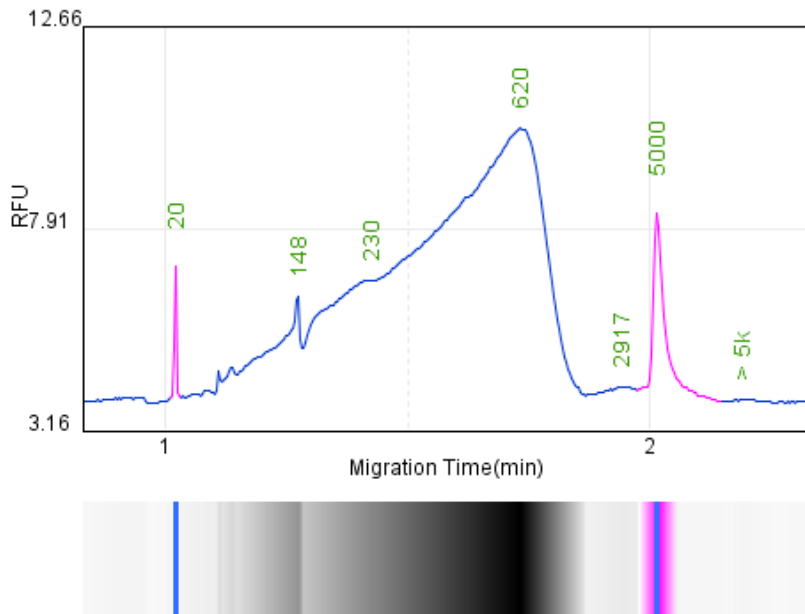
No	bp	ng/μl
1	<LM	N/A
2	<LM	N/A
3	<LM	N/A
4	<LM	N/A
5	20	N/A
6	170	0.18
7	204	0.30
8	217	0.13
9	223	0.21
10	241	0.24
11	261	0.24
12	277	0.22
13	305	0.44
14	413	1.44
15	443	0.24
16	464	0.32
17	641	0.87
18	852	0.85
19	2,758	0.01
20	3,278	0.02
21	5,000	N/A
22	> 5k	N/A
23	> 5k	N/A
24	> 5k	N/A
25	> 5k	N/A
26	> 5k	N/A
27	> 5k	N/A
28	> 5k	N/A
29	> 5k	N/A
30	> 5k	N/A
31	> 5k	N/A
32	> 5k	N/A
33	> 5k	N/A
34	> 5k	N/A
35	> 5k	N/A
36	> 5k	N/A
37	> 5k	N/A
38	> 5k	N/A
39	> 5k	N/A
40	> 5k	N/A
41	> 5k	N/A
42	> 5k	N/A
43	> 5k	N/A
44	> 5k	N/A
45	> 5k	N/A

---

No	bp	ng/μl
46	> 5k	N/A
47	> 5k	N/A
48	> 5k	N/A
49	> 5k	N/A
50	> 5k	N/A
51	> 5k	N/A
52	> 5k	N/A
53	> 5k	N/A
54	> 5k	N/A
55	> 5k	N/A
56	> 5k	N/A
57	> 5k	N/A
58	> 5k	N/A
59	> 5k	N/A
60	> 5k	N/A
61	> 5k	N/A
62	> 5k	N/A
63	> 5k	N/A
64	> 5k	N/A
65	> 5k	N/A
66	> 5k	N/A
67	> 5k	N/A
68	> 5k	N/A
69	> 5k	N/A
70	> 5k	N/A
71	> 5k	N/A
72	> 5k	N/A
73	> 5k	N/A
74	> 5k	N/A

---

Result:	L4_S1A08_R1_CH3.bopx	Instrument ID:	5567003745270004
Test Time:	2025-Jun-04 10:55(UTC+08)	Software & Firmware Version:	3.4.3 & 5
Operator:		Cartridge & Run Number:	S2-O-4CH-250210-520 & 99
Method:	M-4-10-08-160	Manufacture & Expiration Date:	2025-Feb-10 & 2025-Aug-09
Sample Name:		Alignment Marker:	UserDefine (20 bp & 5K bp)
Sample ID:	L4		



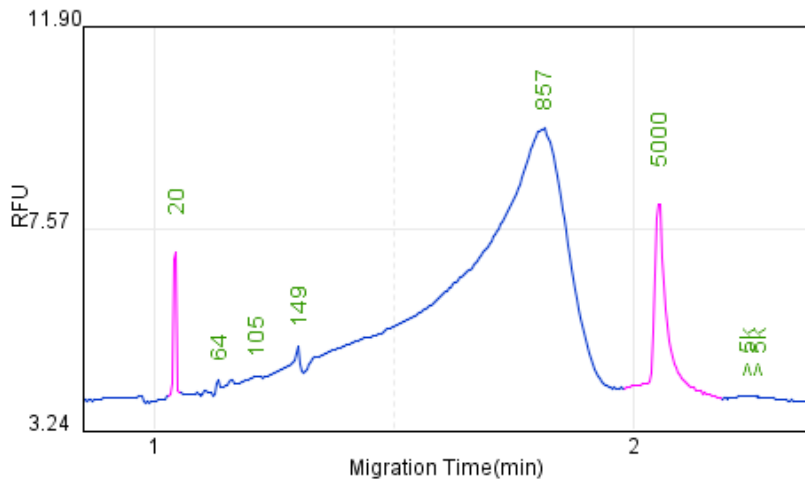
No	bp	ng/μl
1	<LM	N/A
2	<LM	N/A
3	<LM	N/A
4	20	N/A
5	44	0.21
6	53	0.37
7	64	0.45
8	77	1.14
9	148	6.80
10	230	7.99
11	620	52.92
12	2,917	0.13
13	5,000	N/A
14	> 5k	N/A
15	> 5k	N/A
16	> 5k	N/A
17	> 5k	N/A
18	> 5k	N/A
19	> 5k	N/A
20	> 5k	N/A
21	> 5k	N/A
22	> 5k	N/A
23	> 5k	N/A
24	> 5k	N/A
25	> 5k	N/A
26	> 5k	N/A
27	> 5k	N/A
28	> 5k	N/A
29	> 5k	N/A
30	> 5k	N/A
31	> 5k	N/A
32	> 5k	N/A
33	> 5k	N/A
34	> 5k	N/A
35	> 5k	N/A
36	> 5k	N/A
37	> 5k	N/A
38	> 5k	N/A
39	> 5k	N/A
40	> 5k	N/A
41	> 5k	N/A
42	> 5k	N/A
43	> 5k	N/A
44	> 5k	N/A
45	> 5k	N/A

---

No	bp	ng/μl
46	> 5k	N/A
47	> 5k	N/A
48	> 5k	N/A

---

Result:	L3_S1A07_R1_CH3.bopx	Instrument ID:	5567003745270004
Test Time:	2025-Jun-04 10:49(UTC+08)	Software & Firmware Version:	3.4.3 & 5
Operator:		Cartridge & Run Number:	S2-O-4CH-250210-520 & 100
Method:	M-4-10-08-160	Manufacture & Expiration Date:	2025-Feb-10 & 2025-Aug-09
Sample Name:		Alignment Marker:	UserDefine (20 bp & 5K bp)
Sample ID:	L3		



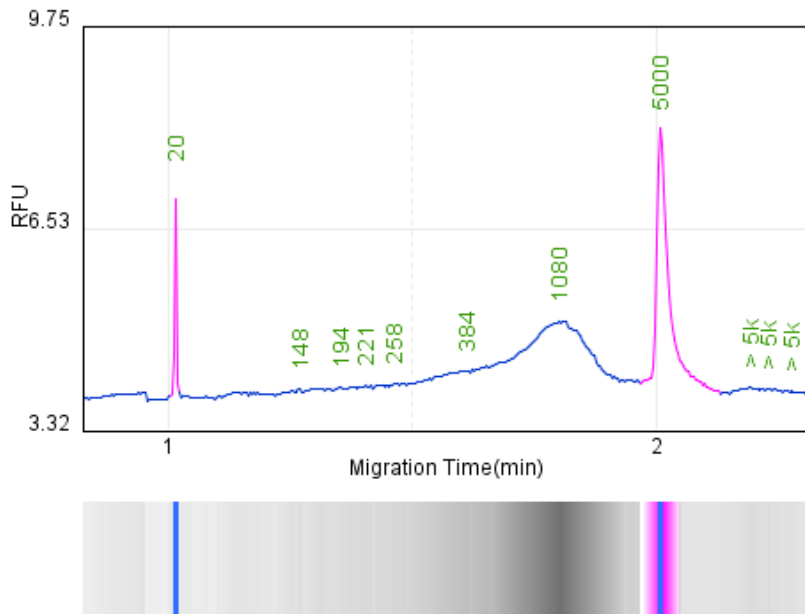
No	bp	ng/μl
1	<LM	N/A
2	<LM	N/A
3	<LM	N/A
4	<LM	N/A
5	20	N/A
6	43	0.08
7	51	0.17
8	64	0.23
9	79	0.63
10	105	1.12
11	149	2.07
12	857	21.50
13	2,832	0.01
14	5,000	N/A
15	> 5k	N/A
16	> 5k	N/A
17	> 5k	N/A
18	> 5k	N/A
19	> 5k	N/A
20	> 5k	N/A
21	> 5k	N/A
22	> 5k	N/A
23	> 5k	N/A
24	> 5k	N/A
25	> 5k	N/A
26	> 5k	N/A
27	> 5k	N/A
28	> 5k	N/A
29	> 5k	N/A
30	> 5k	N/A
31	> 5k	N/A
32	> 5k	N/A
33	> 5k	N/A
34	> 5k	N/A
35	> 5k	N/A
36	> 5k	N/A
37	> 5k	N/A
38	> 5k	N/A
39	> 5k	N/A
40	> 5k	N/A
41	> 5k	N/A
42	> 5k	N/A
43	> 5k	N/A
44	> 5k	N/A
45	> 5k	N/A

---

No	bp	ng/μl
46	> 5k	N/A
47	> 5k	N/A
48	> 5k	N/A
49	> 5k	N/A

---

Result:	P1_S1A09_R1_CH3.bopx	Instrument ID:	5567003745270004
Test Time:	2025-Jun-04 11:01(UTC+08)	Software & Firmware Version:	3.4.3 & 5
Operator:		Cartridge & Run Number:	S2-O-4CH-250210-520 & 98
Method:	M-4-10-08-160	Manufacture & Expiration Date:	2025-Feb-10 & 2025-Aug-09
Sample Name:		Alignment Marker:	UserDefine (20 bp & 5K bp)
Sample ID:	P1		



No	bp	ng/μl
1	<LM	N/A
2	<LM	N/A
3	<LM	N/A
4	<LM	N/A
5	<LM	N/A
6	<LM	N/A
7	20	N/A
8	148	0.04
9	172	0.09
10	182	0.05
11	194	0.10
12	203	0.11
13	221	0.10
14	227	0.03
15	235	0.07
16	250	0.04
17	258	0.07
18	273	0.07
19	384	1.35
20	435	0.56
21	1,080	2.09
22	3,198	0.02
23	3,476	0.01
24	5,000	N/A
25	> 5k	N/A
26	> 5k	N/A
27	> 5k	N/A
28	> 5k	N/A
29	> 5k	N/A
30	> 5k	N/A
31	> 5k	N/A
32	> 5k	N/A
33	> 5k	N/A
34	> 5k	N/A
35	> 5k	N/A
36	> 5k	N/A
37	> 5k	N/A
38	> 5k	N/A
39	> 5k	N/A
40	> 5k	N/A
41	> 5k	N/A
42	> 5k	N/A
43	> 5k	N/A
44	> 5k	N/A
45	> 5k	N/A

---

No	bp	ng/μl
46	> 5k	N/A
47	> 5k	N/A
48	> 5k	N/A
49	> 5k	N/A
50	> 5k	N/A
51	> 5k	N/A
52	> 5k	N/A
53	> 5k	N/A
54	> 5k	N/A
55	> 5k	N/A
56	> 5k	N/A
57	> 5k	N/A
58	> 5k	N/A
59	> 5k	N/A
60	> 5k	N/A
61	> 5k	N/A
62	> 5k	N/A
63	> 5k	N/A
64	> 5k	N/A
65	> 5k	N/A
66	> 5k	N/A
67	> 5k	N/A
68	> 5k	N/A
69	> 5k	N/A
70	> 5k	N/A
71	> 5k	N/A
72	> 5k	N/A
73	> 5k	N/A
74	> 5k	N/A
75	> 5k	N/A
76	> 5k	N/A
77	> 5k	N/A